

UIT Multi-Sensor Subsurface Imaging System

GPR

- Detects and maps features accurately
- High data density and resolution
- Rapid and complete coverage of large areas



EMI

- Detect and map features with greater speed
- Rapid and complete coverage of large areas
- No connection to target utilities required



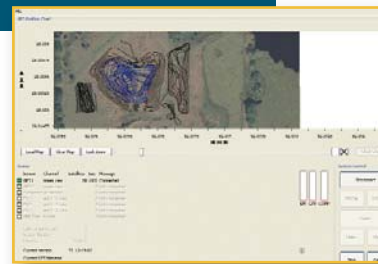
POSITIONING

- Uses any positioning instrument with streaming output
- System choice project specific
- Accuracy range from sub-meter to millimeter



DAS

- Field tracking of instrument location
- Accurate positioning of all data sets
- Integration of all sensor data



SPADE

- Integrates 2D and 3D data in a 3D interpretation workspace
- Tools to interpret subsurface features
- Data output CAD compatible

