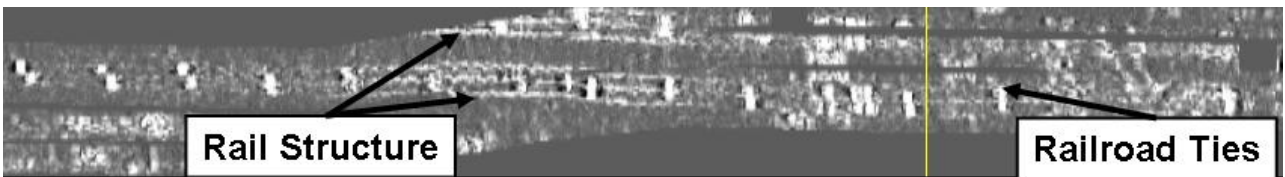
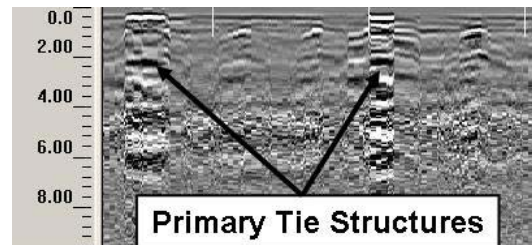


BACKGROUND

Greenhorne & O'Mara, Inc. requested a SUE 'Level B' and 3-D GPR survey to locate trolley tracks that had been paved over in the past, as well as any underground utilities or other targets of interest on 18th street Northwest between Columbia Road Northwest and Vernon Street Northwest, in Washington, D.C.



Above: A GPR cross-section (top) depth slice (bottom) reveal the ties, rails and tracks of the old trolley system that had been paved over.

SCOPE & RESULTS

The survey revealed over 64 features of interest identified and tabulated with the majority of these features related to the buried trolley tracks and associated track infrastructure. Some of the features corresponded with known utilities indicated on facility maps.

METHODOLOGY

The UIT 14-channel TerraVision® II GPR system was employed at the project site. GPS and GPR data were collected together and integrated with the UIT DAS field data acquisition system and DPE processing engine. The data was interpreted using the SPADE proprietary software. Final XYZ mapping results were tabulated and transferred to a CAD map.